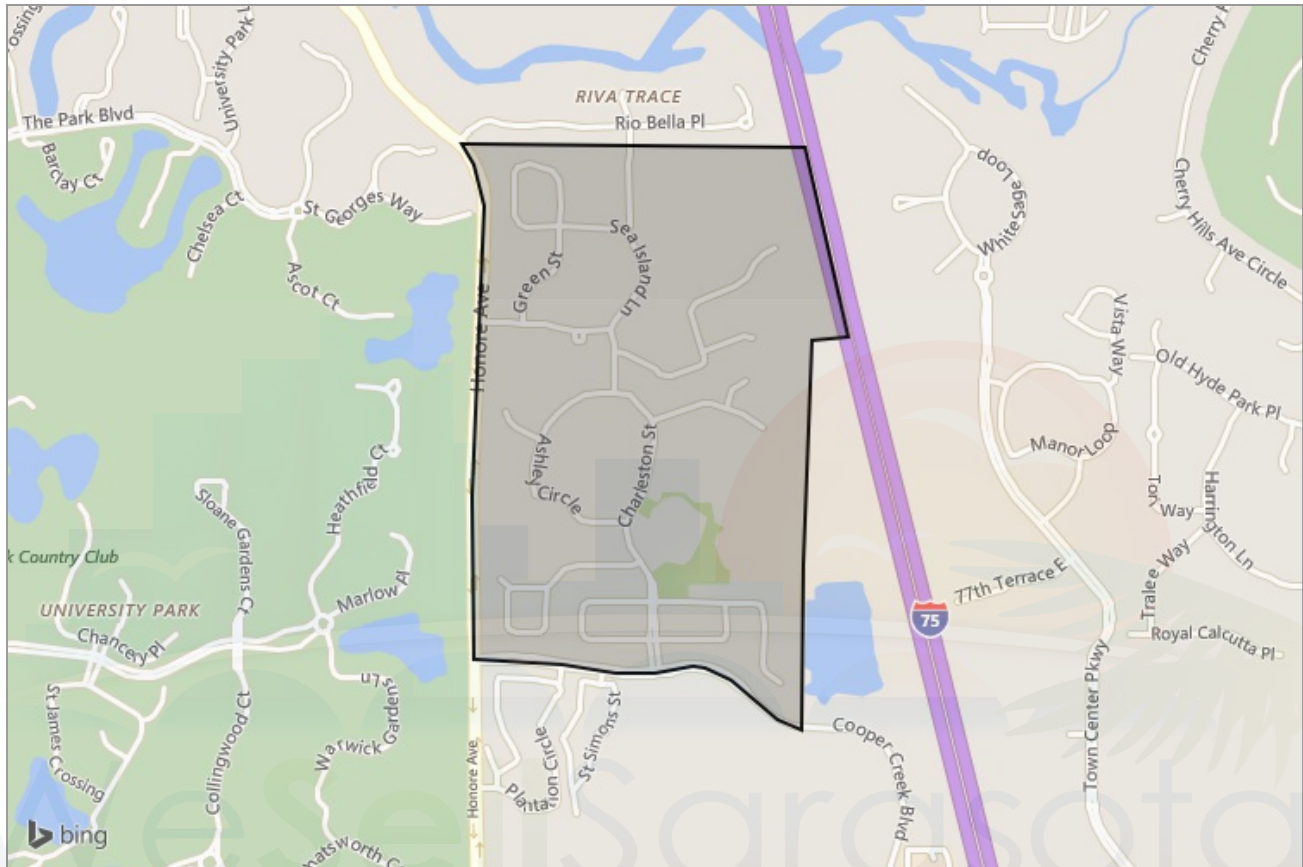




NEIGHBORHOOD REPORT

University Place in Manatee County, FL



Presented by
William McCue

Florida Real Estate License: 3050320



Work: (941) 376-2455 | Mbbile: (941) 376-2455 | Fax: (941) 552-6039 | Fax: (941) 552-6039

Bill@WeSellSarasota.com
<http://www.WeSellSarasota.com>

Bright Realty
5218 Station Way
Sarasota, FL 34233

Neighborhood: Housing Stats and Charts

	University Place	Manatee County	Florida	United States
Median Estimated Home Value	\$366K	\$200K	\$172K	\$319K
Estimated Home Value 12-Month Change	0.2%	11%	8.1%	–
Median List Price	\$427K	\$295K	\$210K	\$80.5K
List Price 1-Month Change	0.6%	0.1%	–	–10.6%
List Price 12-Month Change	15.5%	11.3%	12.4%	–1.8%
Median Home Age	11	31	32	–
Own	77%	72%	68%	66%
Rent	23%	28%	32%	34%
\$ Value of All Buildings for which Permits Were Issued	–	\$239M	\$7.82B	\$102B
% Change in Permits for All Buildings	–	21%	13%	2%
% Change in \$ Value for All Buildings	–	31%	15%	7%

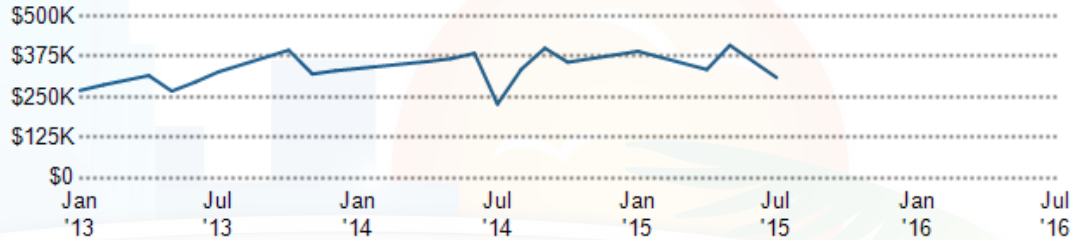
Median Sales Price vs. Sales Volume

This chart compares the price trend and sales volume for homes in an area. Home prices typically follow sales volume, with a time lag, since sales activity is the driver behind price movements.

Data Source: Public records data

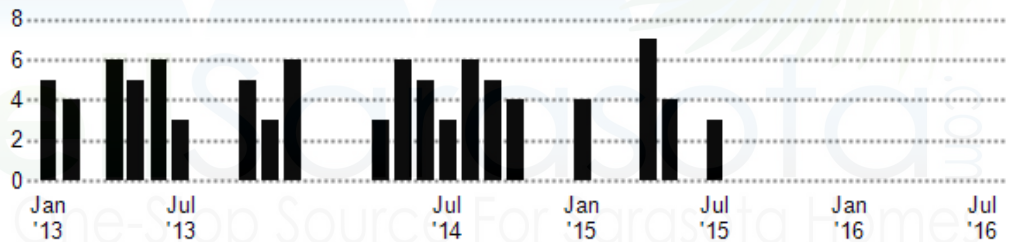
Update Frequency: Monthly

Median Sales Price



Sales Volume

■ Median Sales Price
■ Sales Volume



Median Listing Price vs. Listing Volume

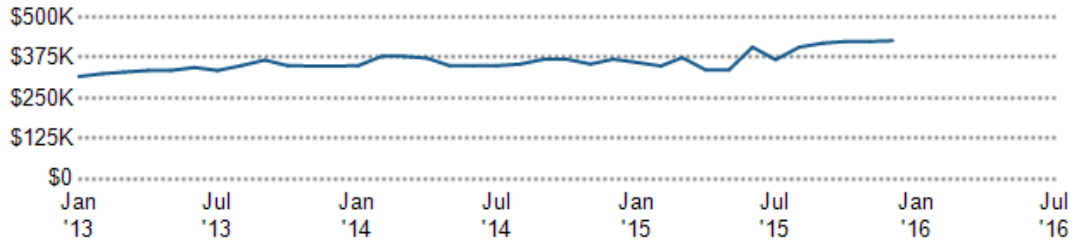
This chart compares the listing price and listing volume for homes in an area. Listing prices often follow listing volume, with a time lag, because supply can drive price movements.

Data Source: On- and off-market listings sources

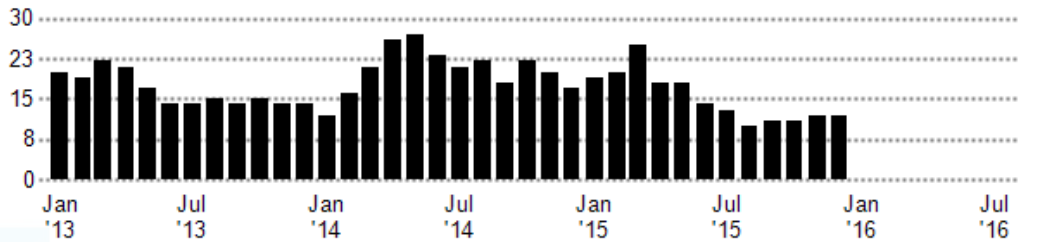
Update Frequency: Monthly

■ Median List Price
■ Listing Volume

Median List Price



Listing Volume



Neighborhood: People Stats and Charts

	University Place	Manatee County	Florida	United States
Population	3.4K	325K	18.9M	309M
Population Density per Sq Mi	1.07K	437	352	—
Population Change since 2000	172.9%	23%	18.2%	9.8%
Median Age	61	46	41	37
Male / Female Ratio	45%	48%	49%	49%
High School Graduate	16%	31%	30%	28%
2-Year Degree	31%	30%	30%	29%
Bachelor Degree	25%	16%	17%	18%
Post-graduate Degree	26%	10%	9%	11%

Population of Children by Age Group

This chart shows the distribution of the population of children by age range — from birth to 17 — in the area of your search.

Data Source: U.S. Census

Update Frequency: Annually

University Place



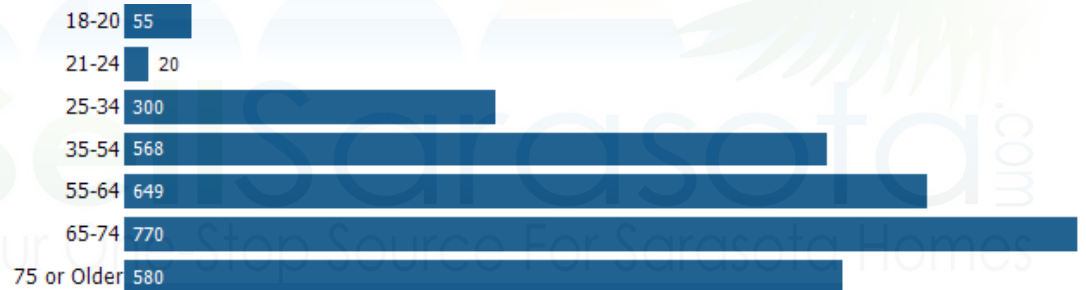
Population of Adults by Age Group

This chart shows the distribution of the population of adults by age range — from 18 to 75-plus — in the area of your search.

Data Source: U.S. Census

Update Frequency: Annually

University Place



Households With Children

This chart shows the distribution of households with children, categorized by marital status, in the area of your search.

Data Source: U.S. Census

Update Frequency: Annually

University Place



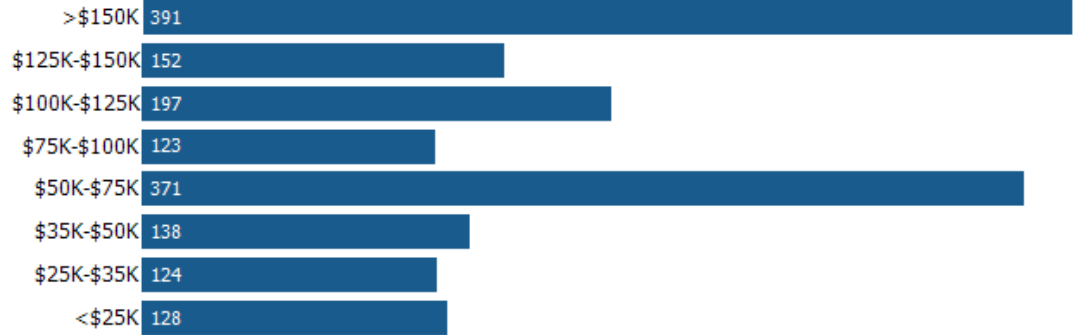
Household Income Brackets

This chart shows annual household income levels within an area.

Data Source: U.S. Census

Update Frequency: Annually

■ University Place



Presidential Voting Pattern

This chart shows how residents of a county voted in the 2014 presidential election.

Data Source: USElectionAtlas.org

Update Frequency: Annually



WeSellSarasota.com
Your One-Stop Source For Sarasota Homes

Neighborhood: Economic Stats and Charts

	University Place	Manatee County	Florida	United States
Income Per Capita	\$62,841	\$27,544	\$26,451	\$28,051
Median Household Income	\$88,333	\$47,910	\$47,309	\$53,046
Unemployment Rate	–	4.6%	4.8%	5%
Unemployment Number	–	7.32K	465K	7.92M
Employment Number	–	153K	9.16M	149M
Labor Force Number	–	161K	9.62M	157M

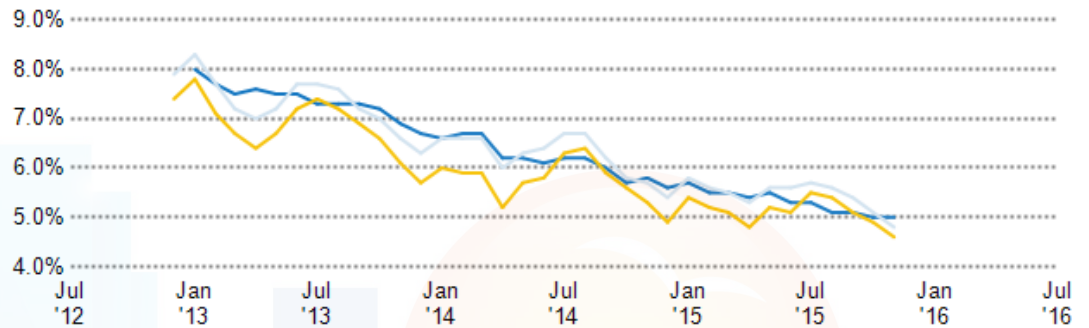
Unemployment Rate

This chart shows the unemployment trend in the area of your search. The unemployment rate is an important driver behind the housing market.

Data Source: Bureau of Labor Statistics

Update Frequency: Monthly

- Manatee County
- Florida
- United States



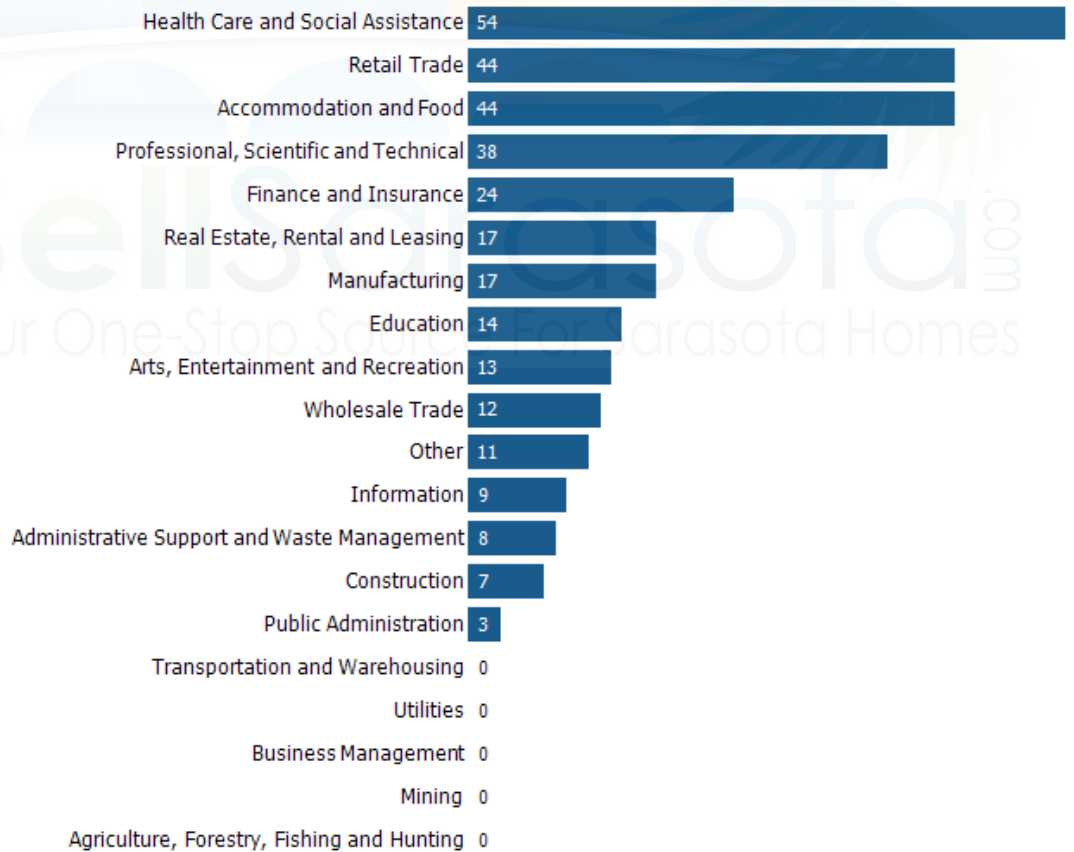
Occupational Categories

This chart shows categories of employment within an area.

Data Source: U.S. Census

Update Frequency: Annually

- University Place



Neighborhood: Quality of Life Stats and Charts

Quality of Life in –

	University Place	Manatee County	Florida	United States
Elevation (in feet)	19	54	–	–
Annual Rainfall (in inches)	–	60	56.46	–
Annual Snowfall (in inches)	–	0	0.06	–
Days of Full Sun (per year)	–	98	98	–
Travel Time to Work (in minutes)	–	24	26	25
Water Quality - Health Violations	–	0	–	–
Water Quality - Monitoring and Report Violations	–	1	–	–
Superfund Sites	0	0	85	2,302
Brownfield Sites	No	Yes	Yes	Yes

Average Commute Time

This chart shows average commute times to work, in minutes, by percentage of an area's population.

Data Source: U.S. Census

Update Frequency: Annually

■ University Place



How People Get to Work

This chart shows the types of transportation that residents of the area you searched use for their commute.

Data Source: U.S. Census

Update Frequency: Annually



Average Monthly Temperature

This chart shows average temperatures in the area you searched.

Data Source: NOAA

Update Frequency: Annually



Walkability Scores (out of 5)

This neighborhood or ZIP code is rated for walking access to general points of interest, reflected in the overall score, plus amenities (such as retail stores) and leisure (such as restaurants and parks). Other factors considered in the scores are street types, weather, public transportation and population density.

Data Source: Maponics

Update Frequency: Quarterly

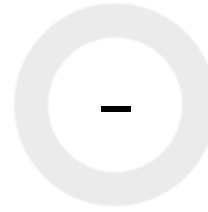
Overall Score



Amenity Score



Leisure Score



WeSellSarasota.com
Your One-Stop Source For Sarasota Homes